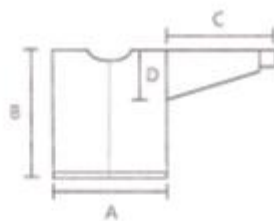


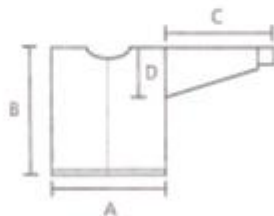
Dale of Norway "SIRDAL" Cardigan requirements, from Dale Book NR 147:

ADULT SIZES:	XS	S	M	L	XL	
Main Color:	700	700	750	800	800gr	
Contrast Color:	200	250	250	250	300gr	
CHILD'S SIZES:	2	4	6	8	10	12 yrs
Main Color:	350	350	400	400	500	550gr
Contrast Color:	100	100	150	150	200	200gr
CAP:						
Main Color:	100	100	100	100gr		
Contrast Color:	50 gr or remnants for each size					
BABY SIZES:	6	9	12	18	24 months	
CARDIGAN & CAP:						
Main Color:	200	200	250	250	300gr	
Contrast Color 1:	100	100	100	100	100gr	
Contrast Color 2:	50	50	50	50	50 gr	



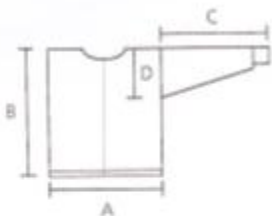
- FINISHED MEASUREMENTS:**
Adult Cardigan:
- A = Chest Width: 41 $\frac{3}{4}$ " (44 $\frac{1}{2}$ ", 46 $\frac{1}{2}$ ", 48 $\frac{1}{2}$ ", 51 $\frac{1}{4}$ ") / 106cm (112cm, 118cm, 124cm, 130cm)
 - B = Body Length: 24 $\frac{1}{2}$ " (25 $\frac{1}{4}$ ", 26", 26 $\frac{3}{4}$ ", 27 $\frac{1}{4}$ ") / 62cm (64cm, 66cm, 68cm, 70cm)
 - C = Sleeve Length: 18 $\frac{1}{2}$ " (18 $\frac{1}{8}$ ", 19 $\frac{1}{4}$ ", 20 $\frac{1}{8}$ ", 20 $\frac{1}{2}$ ") / 47cm (48cm, 50cm, 51cm, 52cm)
 - D = Armhole Depth: 9 $\frac{1}{2}$ " (9 $\frac{1}{8}$ ", 10 $\frac{1}{4}$ ", 10 $\frac{1}{8}$ ", 10 $\frac{1}{2}$ ") / 24.5cm (25cm, 26cm, 26.5cm, 27cm)

Child's Cardigan:



- A = Chest Width: 26 $\frac{1}{4}$ " (29 $\frac{1}{8}$ ", 33 $\frac{1}{8}$ ", 36 $\frac{1}{4}$ ", 39 $\frac{1}{8}$ ", 41") / 68cm (76cm, 84cm, 92cm, 100cm, 104cm)
- B = Body Length: 14 $\frac{1}{2}$ " (16 $\frac{1}{2}$ ", 18 $\frac{1}{8}$ ", 19 $\frac{1}{4}$ ", 20 $\frac{1}{8}$ ", 22") / 36cm (42cm, 46cm, 49cm, 53cm, 56cm)
- C = Sleeve Length: 10 $\frac{1}{8}$ " (11 $\frac{1}{4}$ ", 13", 13 $\frac{1}{4}$ ", 15", 16 $\frac{1}{2}$ ") / 27cm (30cm, 33cm, 35cm, 38cm, 42cm)
- D = Armhole Depth: 5 $\frac{1}{8}$ " (6 $\frac{1}{4}$ ", 7 $\frac{1}{4}$ ", 7 $\frac{1}{8}$ ", 8 $\frac{1}{8}$ ", 9 $\frac{1}{4}$ ") / 15cm (16cm, 18.5cm, 20cm, 22cm, 23.5cm)

Baby Cardigan:

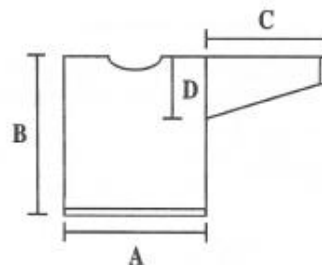


- A = Chest Width: 22 $\frac{1}{2}$ " (24 $\frac{1}{8}$ ", 26", 27 $\frac{1}{8}$ ", 28 $\frac{1}{4}$ ") / 58cm (62cm, 66cm, 69cm, 73cm)
- B = Body Length: 11 $\frac{1}{8}$ " (12 $\frac{1}{8}$ ", 13 $\frac{1}{4}$ ", 14 $\frac{1}{2}$ ", 15 $\frac{1}{4}$ ") / 29cm (32cm, 35cm, 37cm, 40cm)
- C = Sleeve Length: 7 $\frac{1}{2}$ " (8 $\frac{1}{4}$ ", 9", 9 $\frac{1}{8}$ ", 10 $\frac{1}{8}$ ") / 19cm (21cm, 23cm, 25cm, 27cm)
- D = Armhole Depth: 4 $\frac{1}{8}$ " (5 $\frac{1}{4}$ ", 5 $\frac{1}{8}$ ", 6 $\frac{1}{8}$ ", 6 $\frac{1}{2}$ ") / 12.5cm (13.5cm, 14.5cm, 15.5cm, 16.5cm)

PULLOVER finished measurements:

PULLOVER requirements (only in Adult sizes),
 From Dale pamphlet NR 6007:

SIZES:	XS	S/M	M/L	L/XL
MATERIALS: Heilo				
Main Color:	750	800	850	900 gr
Contrast Color:	250	250	250	300 gr



- A = Full Chest Width: 39 $\frac{3}{8}$ " (43 $\frac{1}{4}$ ", 47 $\frac{1}{4}$ ", 51 $\frac{1}{8}$ ") / 100cm (110cm, 120cm, 130cm)
- B = Body Length: 25 $\frac{5}{8}$ " (26 $\frac{3}{4}$ ", 28", 28 $\frac{3}{4}$ ") / 65cm (68cm, 71cm, 73cm)
- C = Sleeve Length: 18 $\frac{1}{2}$ " (19 $\frac{1}{4}$ ", 19 $\frac{3}{4}$ ", 20 $\frac{1}{8}$ ") / 47cm (49cm, 50cm, 51cm)
- D = Armhole Depth: 9 $\frac{7}{8}$ " (10 $\frac{1}{4}$ ", 11", 11 $\frac{3}{8}$ ") / 25cm (26cm, 28cm, 29cm)